



ARCGEO Series

Technology:  Archival

Product:  Tag



For collection and storage of precision time stamped depth, temperature and light-based geolocation data.

Introducing the Lotek ARCGEO series . A new generation of archival tags. The product of over 15 years of archival tag design and manufacturing experience. ARCGEO tags are more robust than their predecessors. They have larger memory and support wet start for ease of handling and deployment in the field.

Options

- Sensors: Light, Depth, Temperature, Wet/Dry sensor.

Features:



Temperature



Depth



Light



Wet/dry sensor

Wet start function:

Automatically enables logging when the tag is immersed.

32MB memory:

Memory contents retained for 25 years ensuring data retention even if the tag is recovered years after the battery is exhausted.

Product Applications

Timing of migration/movement studies, behaviour identification and characterization studies; feeding, spawning, migration, endangered species critical habitat utilization studies,

fisheries management stock structure studies, validation of stock assessment model studies.ocean observing studies.

Model	ARCGEO-9TS	ARCGEO-13TS
Weight in air (g)	5.1	12
Weight in water (g)	2.3	7.25
Life ^[1] (Months)	24	48
Size (ØxL) (mm)	9 x 38	13 x 57

1. The estimated life is based on a single deployment at 30 second sampling interval.

If you plan to deploy for multiple short deployments and/or sample at shorter intervals, please contact your telemetry specialist



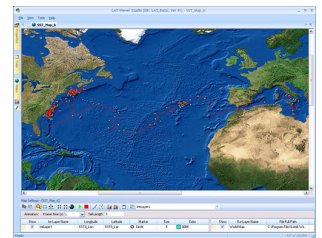
ARCGEO-9TS



ARCGEO-13TS



ARC Tag Reader



LAT Viewer Studio software

Technical specifications:

Depth sensor accuracy: +/-1.0% of full scale

Depth sensor resolution: 0.05% of full scale

Temperature sensor range: -20 °C to 45 °C

Temperature sensor accuracy: better than ±0.3 °C

Temperature sensor resolution: better than 0.05 °C

Memory: 32 MB

Number of sequential logs: 8

Sample rate setting: 1 sec. increments

Software tools:

ARC Tag Talk host

LAT Viewer Studio post-processing and visualization

Warranty

ARCGEO tags are warranted to be free of defects in materials and workmanship under Normal Use for a duration of 50% of Estimated Life to a Maximum of 12 months for ARCGEO-9TS and a Maximum of 24 months for ARCGEO-13TS.

For Warranty terms and conditions, please review our [Warranty Statement](#).